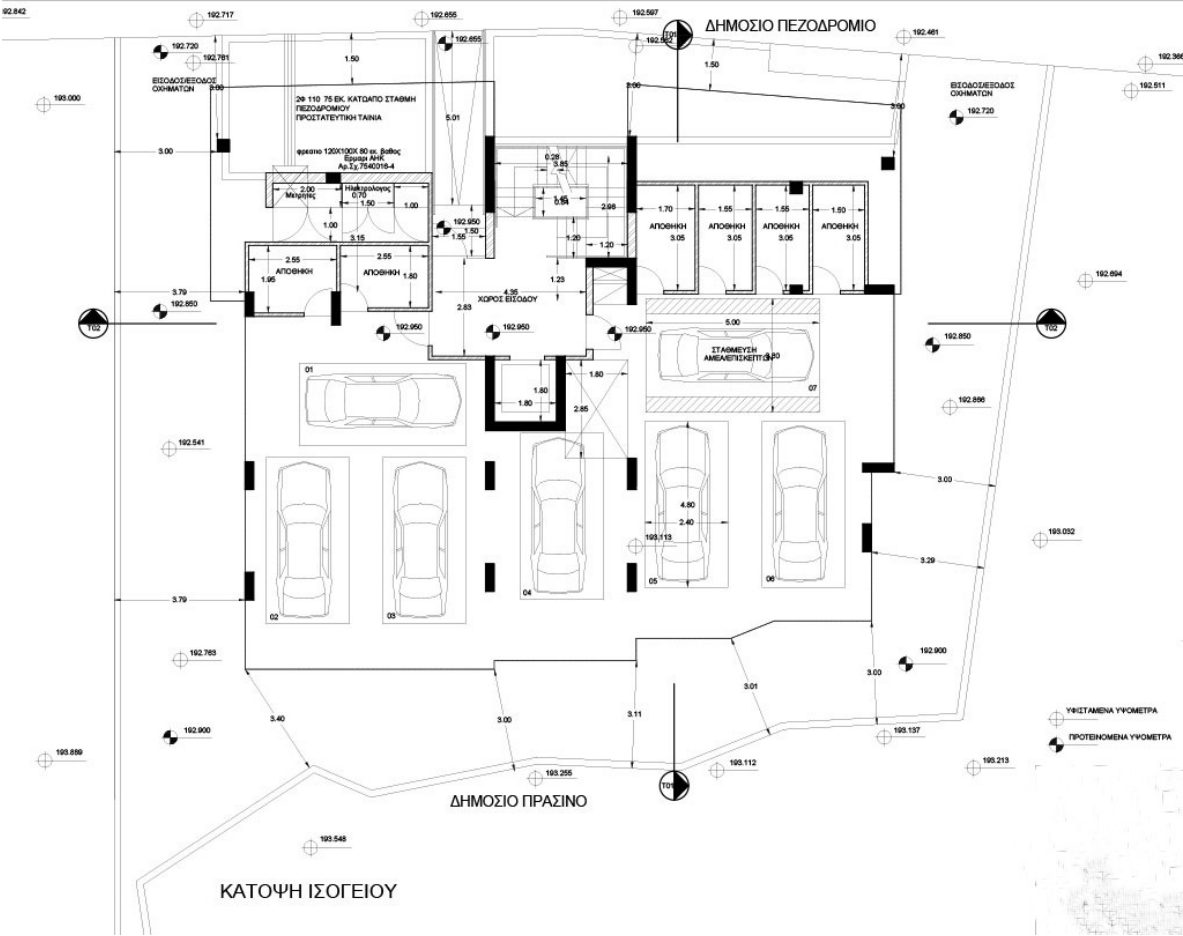


Small residential building in Aglantzia

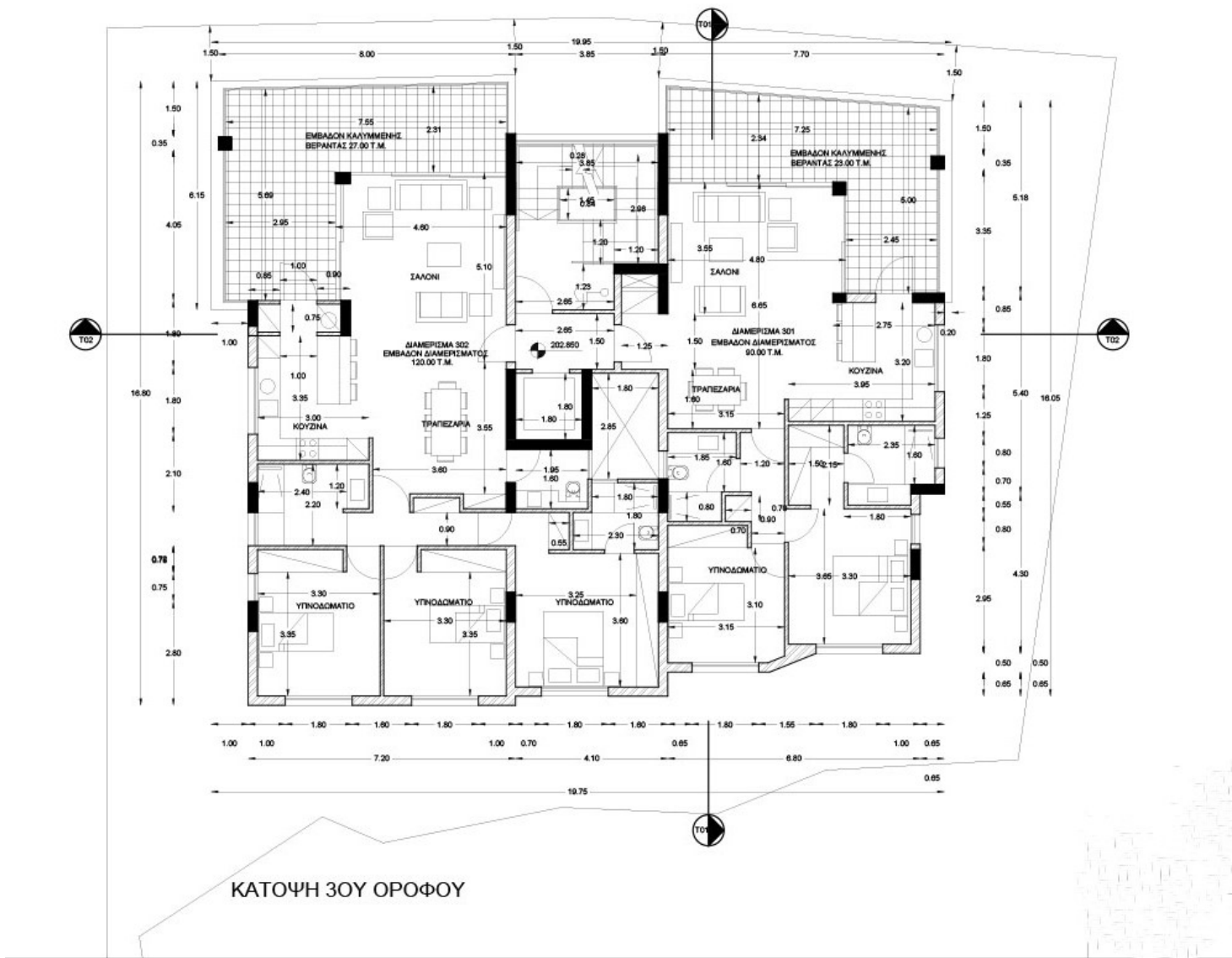
AD# : 18691

ground floor plan



Architectural floor plan of the first floor (ΚΑΤΟΦΗ 1ΟΥ ΟΡΟΦΟΥ). The plan shows a symmetrical layout with two main apartment units, 101 and 102, separated by a central corridor and service areas. Each unit includes a living area (ΣΑΛΟΝΙ), a kitchen (ΚΟΥζίΝΑ), a dining area (ΤΡΑΠΕΖΑΡΙΑ), and a bedroom (ΥΠΝΟΔΟΜΑΤΙΟ). The plan is detailed with dimensions and room labels. A north arrow is located at the top center.

third floor plan



ΚΑΤΟΨΗ 3ΟΥ ΟΡΟΦΟΥ