

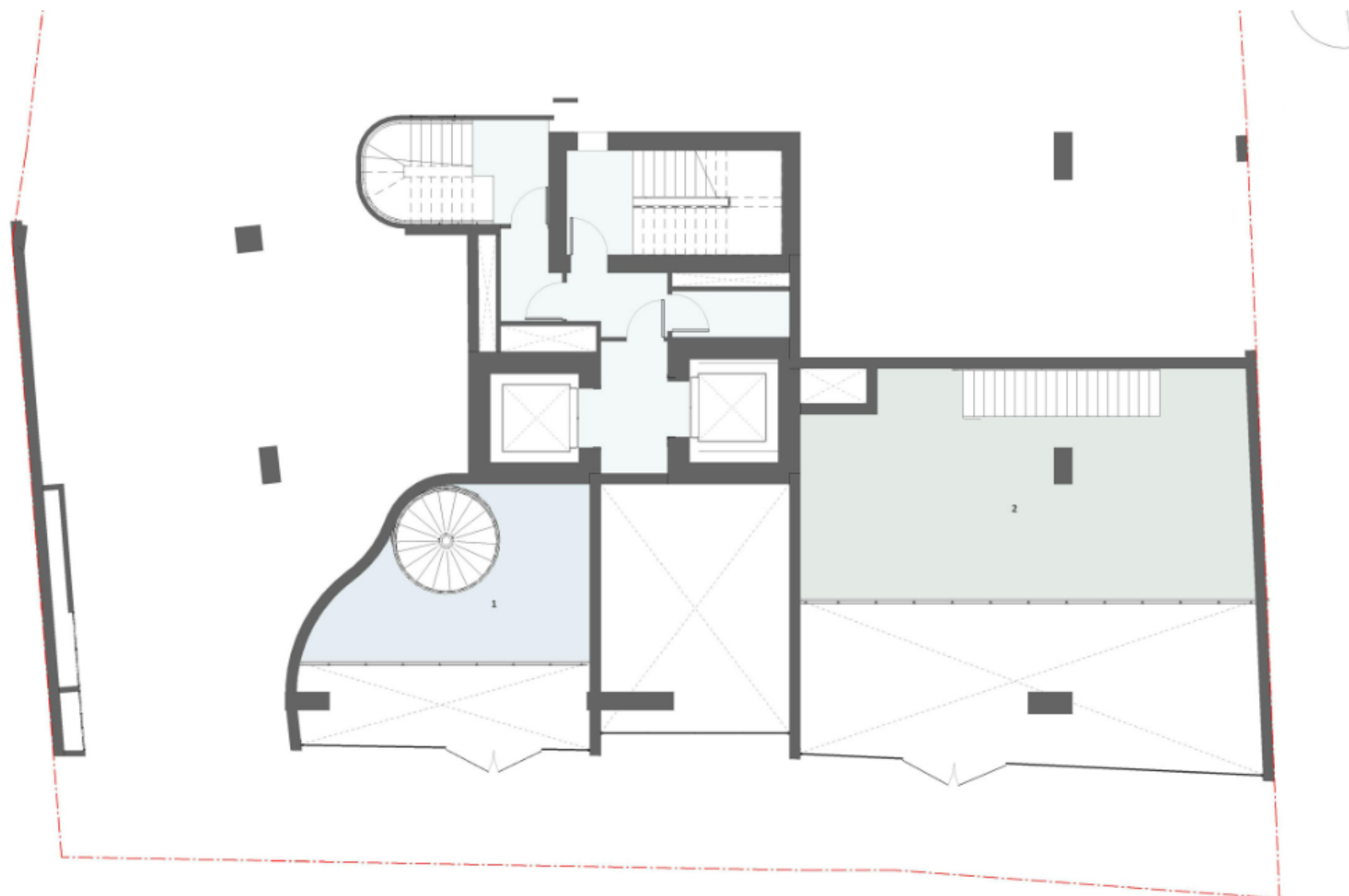
## Sleek residential tower with stunning views over the city

AD# : 18698

### 3rd floor plan



mezzanine floor

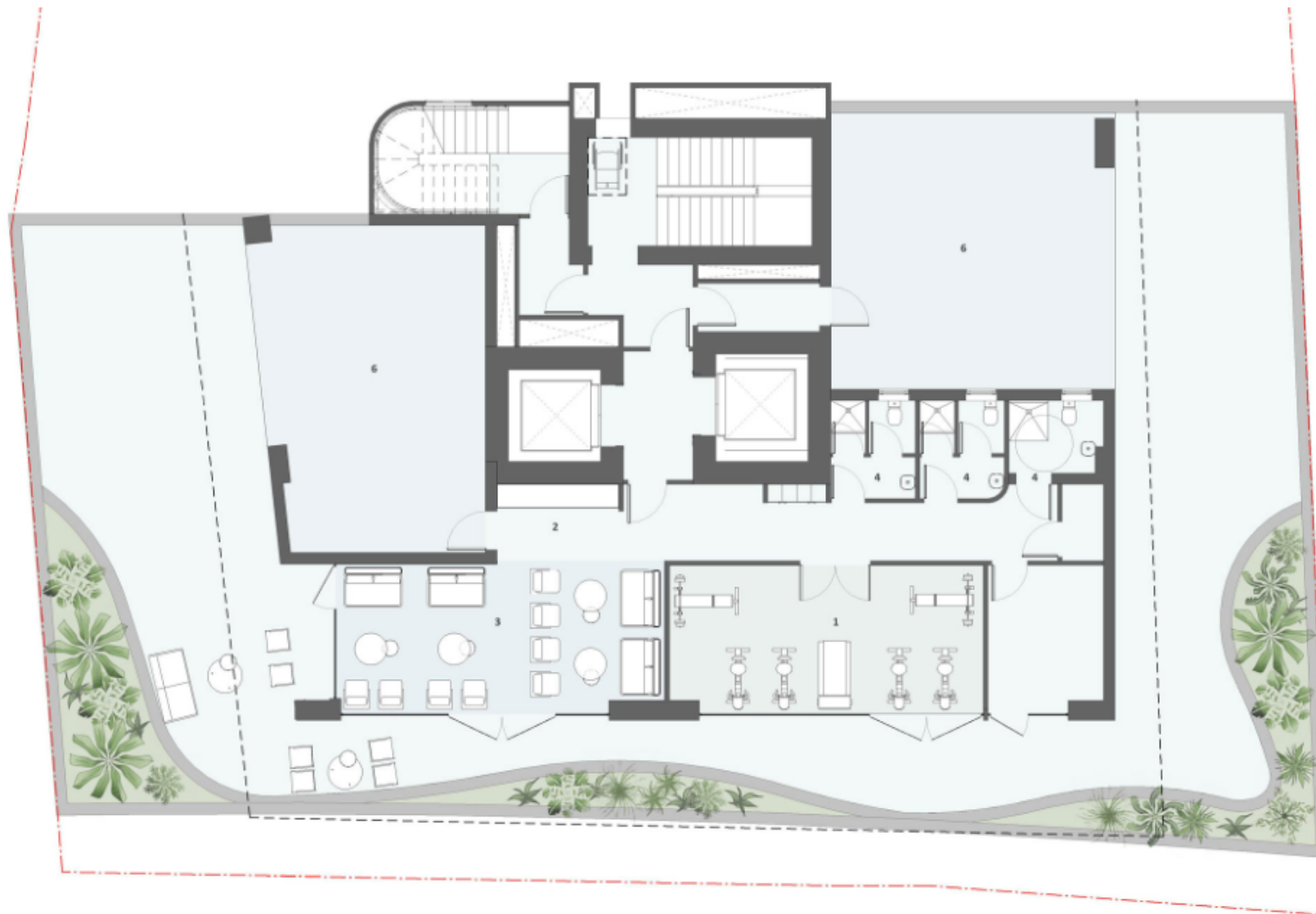


ΚΑΤΟΨΗ ΜΕΣΟΠΑΤΩΜΑΤΟΣ

2nd basement floor



ΚΑΤΟΨΗ 2<sup>ου</sup> ΥΠΟΓΕΙΟΥ



3rd basement floor



ΚΑΤΟΨΗ 3<sup>ου</sup> ΥΠΟΓΕΙΟΥ